

SICO SOL

Industrial Equipments

*Your Partner
for visionary engineering....*



WE **SICO SOL** INDUSTRIAL EQUIPMENTS, UNDERSTAND YOUR PROCESS REQUIREMENTS. COMPANY WAS FORMED WITH THE VISION OF PROVIDING HIGH QUALITY EQUIPMENT'S AND INNOVATIVE SOLUTIONS TO THE PROCESSING INDUSTRY. WITH OUR EXPERIENCED & DEDICATED TEAM OF PROFESSIONALS, WE OFFERS BELOW SERVICES TO THE EDIBLE OIL, DAIRY, PHARMA, SUGAR, PACKED FOODS, EFFLUENT WATER & OTHER PROCESSING INDUSTRIES.

FILTRATION CONSTITUTES AN IMPORTANT PART IN ANY PROCESS OUR VAST EXPERIENCE IN THE FILTRATION OF VARIOUS SLURRIES, HELPS US TO OFFER THE BEST FEASIBLE SOLUTION TO ANY FILTRATION PROBLEM. WE ADOPT A VERY SPECIFIC APPROACH TO EACH CUSTOMER AND TO EACH FILTRATION PROBLEM.

FILTRATION EQUIPMENT'S

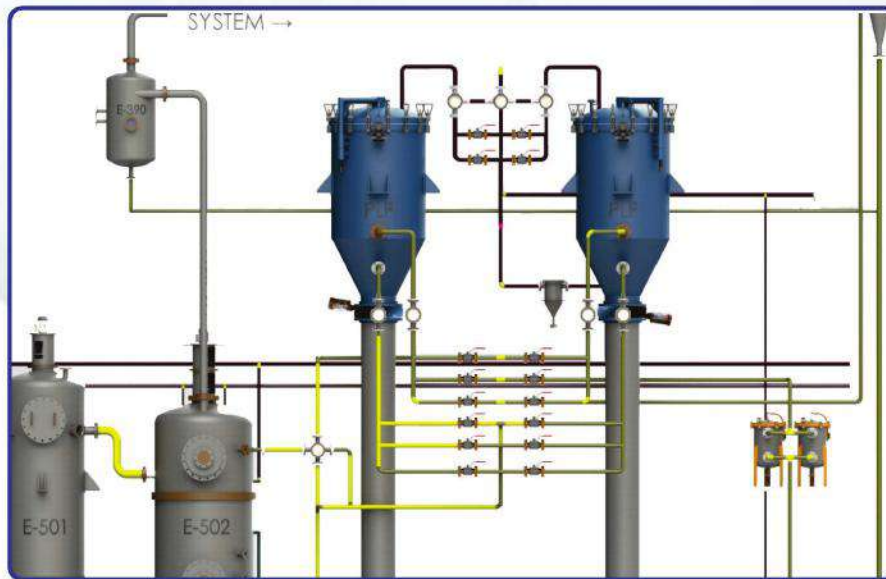
- VERTICAL PRESSURE LEAF FILTER
- HORIZONTAL PRESSURE LEAF FILTER
- MOLTEN SULPHUR FILTER
- FILTER ELEMENTS
- POLISHING FILTERS (SINGLE / MULTIBAGS)
- CANDLE FILTER
- SPARKLE FILTER
- MAGNETIC FILTER
- CLOSED PLATE FILTER (VERTICAL / HORIZONTAL)
- MISCELLA FILTER
- CARBON FILTER / SAND FILTER
- VIBRO SCREENS
- BUCKET, "Y" TYPE / ROTARY BRUSH STRAINER

SPECIALITY EQUIPMENT'S

- STATIC / ONLINE MIXER
- DISC MIXER
- KNIFE MIXER
- HIGH SHEAR MIXER
- PNEUMATIC CONVEYING SYSTEMS
- DUST COLLECTORS
- PLUGO SEAL CONVEYOR
- BULK FLOW CONVEYOR
- ACID DOSING SYSTEMS
- SIGHT FLOW INDICATORS
- ROTARY VALVE
- METAL BELLOWS
- PROCESS ACCESSORIES



VERTICAL PRESSURE LEAF FILTER (VPLF)



Vertical Pressure Leaf Filter Mainly Consist Of Vertical Pressure Vessel With Conical Bottom, Vertically Arranged Filter Leaves, Pneumatic Vibrator, Assembly For Dry Cake Discharge With Actuator Butterfly Valves. One Of Our Salient Feature Is Automatic Discharge Of Cake. Stainless Steel Filter Leaves Eliminate The Use Of Filter Cloth, Which Enable To Reuse Filter In Minimum Time.

The Filtration Area Range From 5 sqm To 120 sqm





APPLICATIONS

- ➔ Bleaching Earth / Activated Carbon
- ➔ Resins
- ➔ Crude Oil
- ➔ Molten Sulphur
- ➔ Ni-catalyst

- ➔ Glucose
- ➔ Fatty acid
- ➔ Brine
- ➔ Winterisation
- ➔ Electrolyte
- ➔ Sugar Syrup

MODELS & SPECIFICATIONS

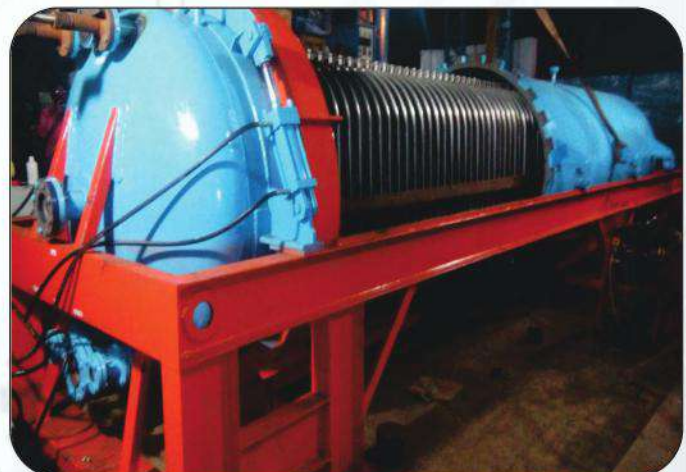
| Sr. No. | FILTER AREA (M2) | LEAF SPACING (M2) | CAKE VOLUME (liters) | Empty Weights (Kg) |
|---------|---------------------|----------------------|-------------------------|-----------------------|
| 1 | 2 | 70 | 50 | 200 |
| 2 | 5 | 70 | 125 | 700 |
| 3 | 8 | 70 | 200 | 850 |
| 4 | 10 | 70 | 250 | 850 |
| 5 | 12.5 | 70 | 310 | 850 |
| 6 | 15 | 70 | 375 | 500 |
| 7 | 15 | 70 | 375 | 800 |
| 8 | 20 | 70 | 500 | 800 |
| 9 | 25 | 70 | 625 | 1050 |
| 10 | 30 | 70 | 720 | 1050 |
| 11 | 35 | 75 | 875 | 2000 |
| 12 | 38.5 | 75 | 950 | 2000 |
| 13 | 42 | 75 | 1050 | 2100 |
| 14 | 46 | 75 | 1150 | 2100 |
| 15 | 50 | 75 | 1250 | 2100 |
| 16 | 60 | 75 | 1500 | 2500 |
| 17 | 70 | 75 | 1750 | 2150 |
| 18 | 70 | 75 | 1750 | 2150 |
| 19 | 78 | 75 | 1950 | 2150 |
| 20 | 85 | 75 | 2125 | 2900 |
| 21 | 90 | 75 | 2250 | 2900 |
| 22 | 100 | 75 | 2500 | 2900 |
| 23 | 120 | 75 | 2875 | 5000 |

HORIZONTAL PRESSURE LEAF FILTER (HPLF)



As compared to the continuous filtration process HPLF offer simplicity of process, easy operation & maintenance, modest space requirement & low energy consumption. The horizontal pressure leaf filters are classified as how filter is open for cleaning.

1. Shell retraction : filter body/shell retracted back while head and leaf bundle is stationery.
2. Leaf bundle retraction : In this type filter head and leaf bundle moves while opening.
The filtration area ranges from 5 sqm. To 175 sqm.



HORIZONTAL PRESSURE LEAF FILTER (HPLF)



APPLICATIONS

- ➔ Alkyd Resin
- ➔ Crude Edible Oil
- ➔ Winterisation / Wax
- ➔ Bleaching Earth

- ➔ Molten Sulphur
- ➔ Amine
- ➔ Sugar Industry
- ➔ Starch

| Sr. No. | FILTER AREA (M2) | LEAF SPACING (M2) | CAKE VOLUME (liters) | Empty Weights (Kg) |
|---------|---------------------|----------------------|-------------------------|-----------------------|
| 1 | 2 | 100 | 60 | 850 |
| 2 | 5 | 100 | 150 | 1150 |
| 3 | 10 | 100 | 300 | 1550 |
| 4 | 15 | 100 | 450 | 1750 |
| 5 | 20 | 100 | 600 | 1950 |
| 6 | 25 | 100 | 750 | 2100 |
| 7 | 30 | 100 | 900 | 2250 |
| 8 | 40 | 100 | 1200 | 2550 |
| 9 | 50 | 100 | 1500 | 2800 |
| 10 | 60 | 100 | 1800 | 2900 |
| 11 | 70 | 100 | 2100 | 3050 |
| 12 | 80 | 100 | 2400 | 3300 |
| 13 | 100 | 100 | 3000 | 6550 |
| 14 | 125 | 100 | 3750 | 7500 |
| 15 | 150 | 100 | 4500 | 8000 |
| 16 | 175 | 100 | 5250 | 8500 |



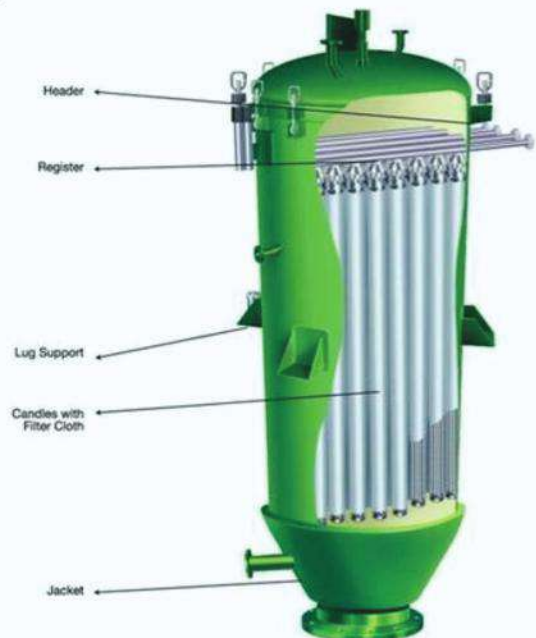
MISCELLA FILTER



DUST COLLECTOR



**PNEUMATIC EARTH CONVEYING
SYSTEM**



CANDLE FILTER



MOLTEN SULPHUR FILTER



SPARKLE FILTER



MAGNETIC FILTER



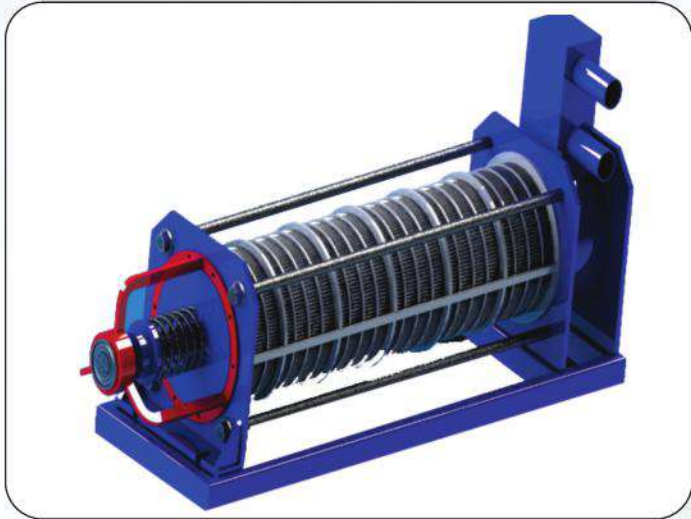
CARBON FILTER / SAND FILTER



CLOSED PLATE FILTER



VIBRO SCREENS



DEWATERING MACHINE



WEDGE WIRE SCREEN



ROTARY DRUM SCREEN WEDGE WIRE



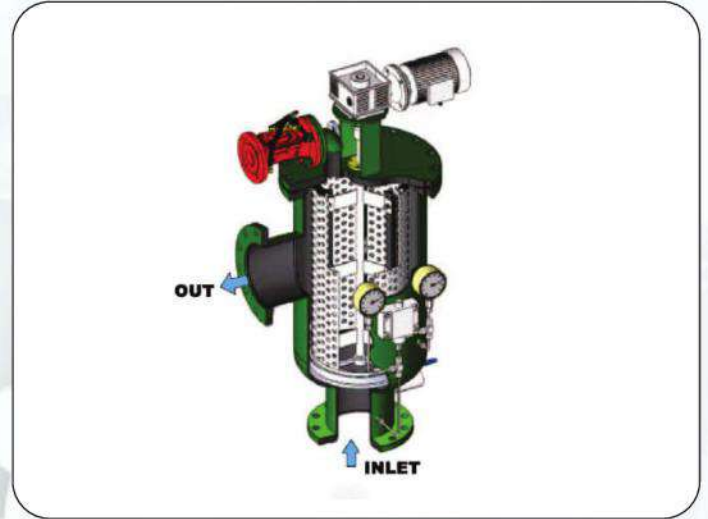
LATUER TUN SCREEN



WEDGE WIRE SCREEN



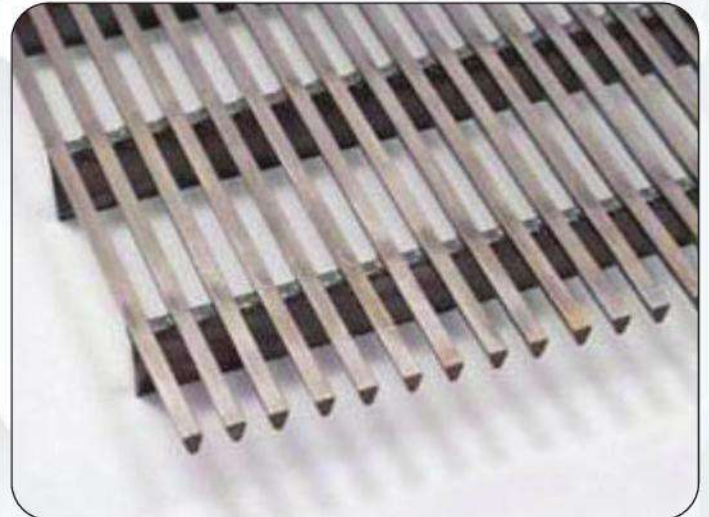
WEDGE WIRE CUSTOMIZED SCREEN



BACKWASH POLISH FILTER



STAINLESS STEEL NOTCH WIRE TYPE FILTER



WEDGE WIRE PANELS



AUTOMATIC SELF CLEANING FILTER

POLISH FILTER



Micro polish filter is available in 5 to 15 microns with single bag or multi bag systems for efficient and economic filtration of solvent liquid, vegetable oil, syrup with low medium solid content and they are designed for use with standard filter bag.

In this filter, the filtration is done through a filter bag made of filter cloth. The liquid enter inside a bag and come out after filtration on the outside periphery. The filter cake has to be cleaned by removal of the bag. Hence they are installed in pairs but used one at a time.



•**MIXER**

(Inline mixer / Disc mixer / Knife mixer / High shear mixer)



LIQUID DISTRIBUTOR



STRUCTURAL PACKING



DEMISTER PAD

FILTER ELEMENTS



The filter elements is the actual heart of each filter and most problems with pressure leaf filters are caused by poor leaf construction and design SICOSOL provides variety of filter leaves differing in shape, design and material choice. We also repair and rebuild your filter elements. Filter elements are available in form viz or single layer, multi layer, with or without frame made from optimal wire mesh meeting all your requirements.

MECHANICAL SEAL



SICOSOL manufacture a wide range of Mechanical Shaft Seals of experience expertise in Sealing Technology. We manufacture highly efficient and reliable Mechanical Seals for Centrifugal Pumps, Turbine Pumps, Mixers, Agitators, Autoclaves, Compressors and other equipments having rotating shafts. Our Mechanical Seals are serving the needs of VEGETABLES OIL REFINERY SOLVENT EXTRACTION PLANTS CHEMICAL PROCESSING, DAIRY & OTHER PROCESS INDUSTRIES.

SPARE PARTS

- ➔ SRG 509/610
- ➔ VO 10/20/30
- ➔ WESTFALIA

Separator Spares & Equipment, **SICO SOL** specializes in aftermarket and genuine spare parts for Alfa Laval, GEA Westfalia Separators, and plate heat exchangers. We have grown from a spare parts provider to a thriving, reliable, global provider of spare parts and equipment. We are one of the largest and truly independent suppliers of OEM and aftermarket spare parts and services for Alfa Laval Separators and GEA Westfalia Separators.

Separator Spares & Equipment, **SICO SOL** is committed to providing the largest selection of spare parts in the industry and we are continuously increasing our inventory to meet the demands of our customers. All spare parts whether genuine or equivalent are fully compatible and carry a 12-month warranty on all non-wear items. All stock parts can be delivered next day and world-wide shipping is available.

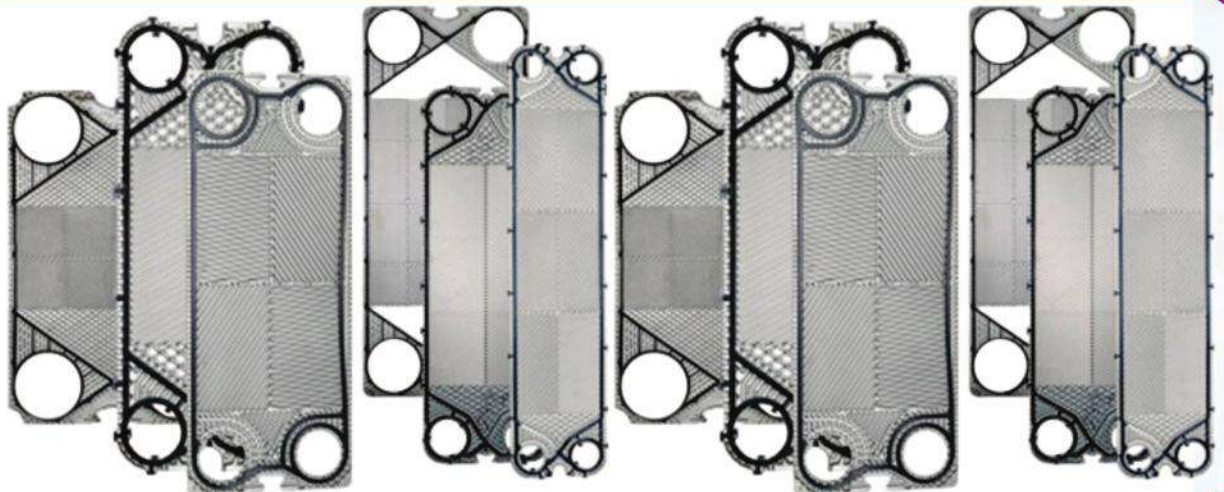


FILTER BAGS

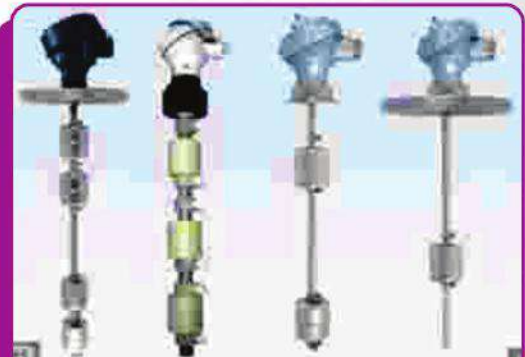


Plate Heat Exchanger Spare Parts

- >> Alfa Laval Plate Heat Exchanger Spare Parts
- >> GEA Plate Heat Exchanger Spare Parts
- >> Kelvion Plate Heat Exchanger Spare Parts

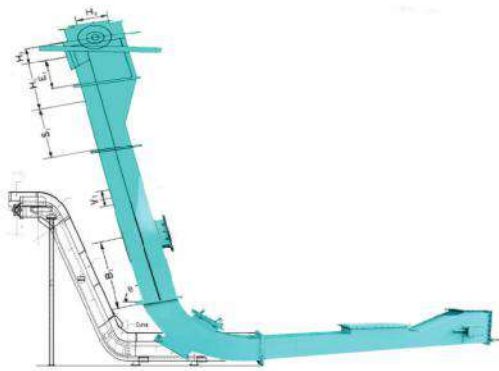


- >> SIGHT FLOW INDICATOR
- >> MAGNETIC FLOAT SWITCH
- >> SPRAY NOZZLES





SHELL & TUBE HEAT EXCHANGER



BULK FLOW CONVEYOR



ROTARY VALVE



PLUGO SEAL CONVEYOR



ACID DOSING SYSTEMS



BUCKET STRAINER



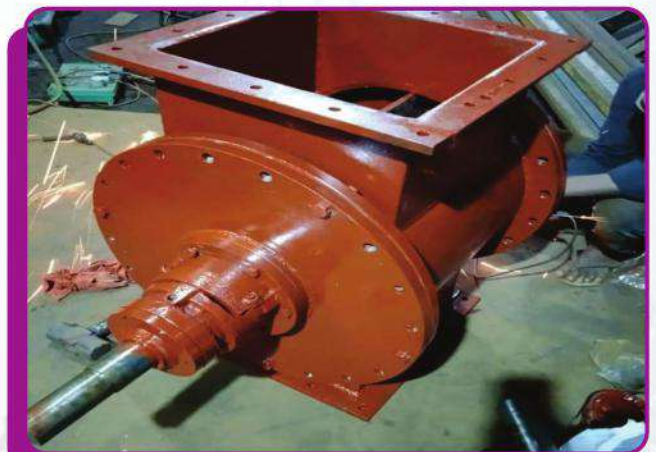
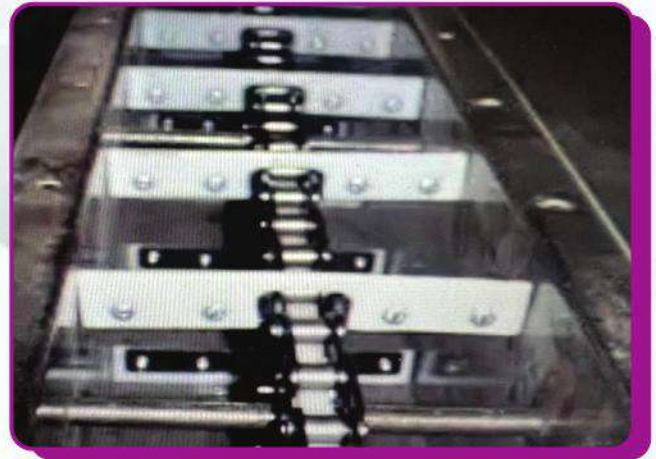
PUMPS SPARES



METAL BELLOW

SPARES FOR SOLVENT EXTRACTION PLANTS

Chain, Cadre Frame, Bevel Washer, Sprockets Bush, Rotary Valves, Conveyor, Bulk Flow & Redler Chian Conveyor Machine Parts.







SICOSOL INDUSTRIAL EQUIPMENTS

**W-256, TTC Industrial Area, MIDC Rabale,
Navi Mumbai - 400 701.**

E-mail : sicosol256@gmail.com
info@sicosol.in

Mob. : 9323380822 / 9653129295

Web : www.sicosol.in